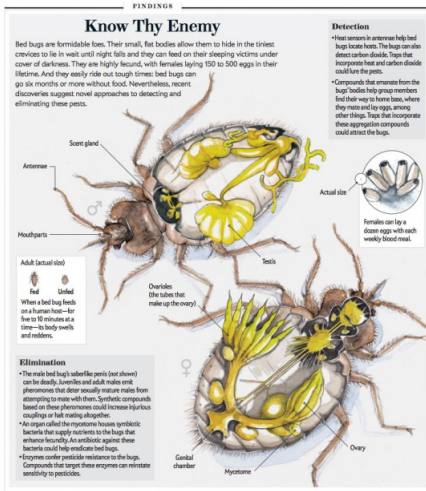


Bed Bug Anatomy

By DoMyOwn staff



54 Scientific American, February 2012

© 2012 Scientific American

Illustrations by Mike Rodden

- **Internal Anatomy:**
 - Males: Scent glands, testis, intestines
 - Females: Scent glands, intestines, genital chamber, mycetome, ovaries, and ovarioles
- **External Anatomy:**
 - Bed bugs have three body segments: Head, thorax, and abdomen
 - Two antennae
 - Two eyes
 - Six legs
 - Reddish brown in color
 - Bright red after being engorged from a blood meal
- Piercing sucking mouth parts, also known as a sharp proboscis, that they insert into the human host's skin
- **Differences between sexes:**
 - Males have sharpened genitalia
 - Female have a softened abdominal region for copulation
- **Primary source of nourishment**
 - **Human blood**
 - Sometimes other mammal's and bird's blood

Example of Bed bug Nymph up close:



This nymph picture of a bed bug is noticeably more transparent and lighter colored than the adult forms.

Example of bed bug probing human skin up close:



This is an adult female bed bug on the surface the skin, take special notice to the dark rust color and circular abdomen region.

See also: [Bed Bug Identification](#)