

# FRONT



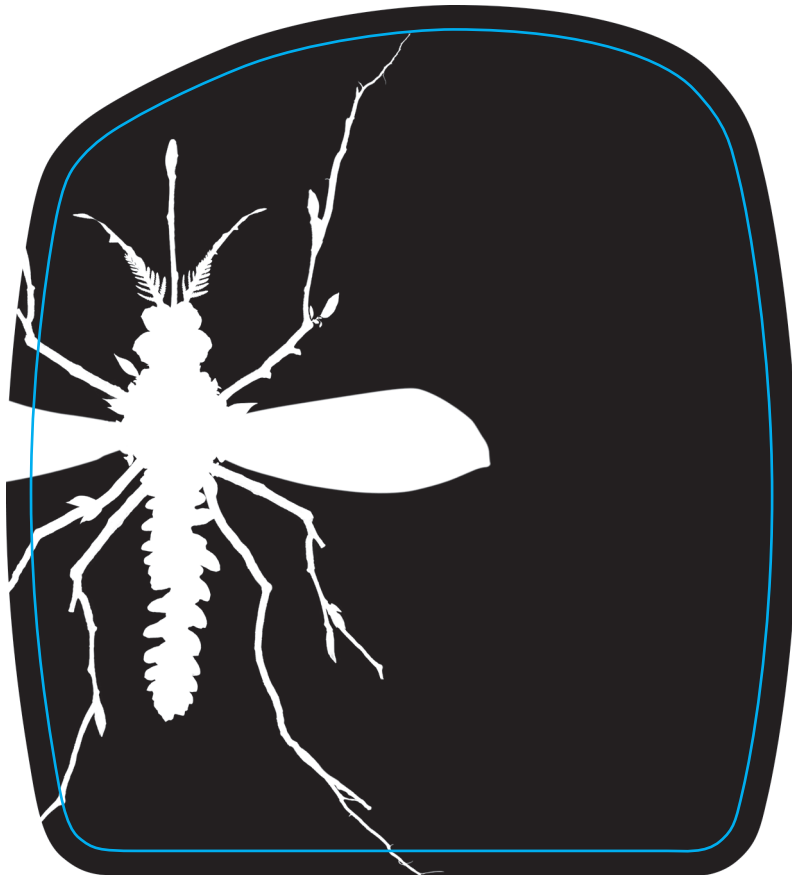
■ Pantone 368 C

■ Pantone 342 C

## ART DEPARTMENT

Job # / Filename 33725_Mosq_Tick	Item # ECSM-33725-01	UPC # 895591001327	Page Size	Revision #
Designer Greg S.	Product Manager Steve B.	Start Date	Due Date	Today's Date 02/21/20
File Format AI CC	Fonts	Color (Spot or 4C) Prints CMYK + PMS 368 C, and PMS 342 C	# of Colors 6	
Printing Process / Finishing Matte finish with spot UV.		Comments Print out for Color Match Proof		

**UV COATING**  
**FRONT**



**BLACK = UV COATING**  
**WHITE = MATTE FINISH**

# BACK

## OUTSIDE OF BOOKLET

FOLD

**INSTRUCCIONES DE USO:  
AGITE BIEN ANTES DE USAR. LEA TODA LA  
ETIQUETA Y SIGA LAS INSTRUCCIONES DE USO.**

**ANTES DE USAR**

- Listo para usar.
- Aplique durante un día seco y no lo use si se espera lluvia en menos de 24 horas.
- Evite regar durante 48 después de la aplicación.
- Vuelva a aplicar después de lluvias intensas, cada tres a cuatro semanas o como se ven las plagas enumeradas.
- Si la temperatura excede los 29,4 °C, rocíe durante las primeras horas de la mañana o de la tarde cuando hace más frío. No lo aplique bajo el sol de mediodía, ya que las hojas podrían quemarse temporalmente.
- Algunas plantas con tejido delicado y/o nuevos crecimientos y flores delicados pueden ser sensibles a los aceites. Si no está seguro, pruebe rociando algunas hojas/flores 1 día antes de rociar toda la planta. No lo use en plantas si observa la presencia de quemaduras y manchas en las hojas.

**INSTRUCCIONES DE ROCIADO:**

- Conecte el rociador a la manguera. Asegúrese de que la perilla indicadora de la boquilla se encuentre en la posición "OFF" (DESACTIVADO) detrás de la lengüeta de seguridad.
- Abra el paso de agua. Extienda la manguera hasta el área más lejana a tratar y vaya retrocediendo hacia el grifo para asegurar una cobertura completa.
- Para COMENZAR a rociar, sostenga el envase en forma vertical y apunte la boquilla hacia el sitio a tratar (no apunte hacia el suelo). Doble la pequeña lengüeta plástica de seguridad hacia atrás con el pulgar y gire la perilla en dirección de las manecillas del reloj hasta que se detenga en la posición "ON" (ACTIVADO). El agua se mezclará automáticamente con el producto.
- Rocíe según se indica en las instrucciones para cada lugar de uso a continuación.
- Para DETENER el rociado, doble la lengüeta de seguridad de plástico pequeña hacia atrás y gírela en dirección contraria a las manecillas del reloj hasta que el indicador esté en la posición "OFF" detrás de la lengüeta de seguridad.
- Corte el agua. Para liberar la presión de agua antes de retirar el rociador de la manguera, doble la lengüeta de seguridad hacia atrás y gire la perilla hasta la posición "WATER" (AGUA) hasta que deje de salir agua. Luego vuelva a girarla hacia la posición "OFF."
- Desconecte el rociador de la manguera.

**PARA APLICACIONES EN CÉSPEDES**

**CÓMO APLICAR:**

- Utilice la mitad la botella (0,48 litros) del EcoSmart® Yard Protection Concentrate para control de mosquitos y garrapatas para tratar hasta 464,52 m<sup>2</sup> de césped, como aplicación pesada inicial.
- Después de una hora, disperse el contenido restante de la misma manera que la aplicación inicial
- Aplique de forma pareja sobre el área deseada como un rociador de cobertura completa. Evite regar durante 48 después de la aplicación.

**CÓMO APLICAR:**

- Aplique como un rociador de follaje completo.
- Moje las hojas y las ramas hasta el punto de caída. Trate de rociar en la parte inferior de las hojas y penetrar en el follaje denso.
- Rocíe en árboles con la suficiente altura como para cubrir las ramas inferiores.
- Rocíe cualquier acumulación de agua estancada y debajo de porches y terrazas.
- Repetir después de una hora.
- Evite regar durante 48 después de la aplicación.

SHAKE WELL BEFORE USING

**ecosmart**  
-THE SAFE PESTICIDE BRAND

**YARD PROTECTION CONCENTRATE  
MOSQUITO & TICK CONTROL**

The active ingredients in EcoSmart® Yard Protection Concentrate for Mosquito and Tick Control consist of a blend of essential plant oils combined with Sodium Lauryl Sulfate, making it an effective insecticide that is environmentally friendly. It is also safe for use around children and pets when used as directed. To learn more about this product and our entire line of pesticides, please visit us at [www.ecosmart.com](http://www.ecosmart.com).

PRODUCT FACTS	
<b>KILLS &amp; REPELS</b>	Kills brown dog ticks and repels mosquitoes.
<b>WHERE TO USE</b>	Lawns, landscapes, recreational areas and other outdoor surfaces. Do not use on vegetables, fruits or other food plants.
<b>QUESTIONS &amp; COMMENTS</b>	Call toll free 1-800-321-1741 or visit us online at <a href="http://www.ecosmart.com">www.ecosmart.com</a> .

**SHAKE WELL BEFORE USING.  
READ ENTIRE LABEL AND USE ACCORDINGLY.**

**EASY-TO-USE: CONNECT TO HOSE AND SPRAY  
TREATS UP TO 5,000 SQ. FT.**



Manufactured for: Kittrich Corporation  
1585 W. Mission Blvd. Pomona, CA 91766

This product or use thereof is covered under US Patent No. 8,877,219  
— other US and Foreign Patents Pending.

OPEN FOR DIRECTIONS & PRECAUTIONS

ABRA PARA VER INSTRUCCIONES Y PRECAUCIONES



ECSM-33725-01

8 95591 00132 7

3.24"

PAGE 4

3.24"

COVER  
(first page)

4.28"

# BACK INSIDE OF BOOKLET

FOLD

**DIRECTIONS FOR USE:**  
SHAKE WELL BEFORE EACH USE.  
READ ENTIRE LABEL AND USE ACCORDINGLY.

**SHAKE WELL BEFORE EACH USE**

<b>BEFORE YOU USE</b>	<ul style="list-style-type: none"> <li>• Ready-to-use.</li> <li>• Apply on a dry day and do not use if rain is expected within 24 hours.</li> <li>• Delay watering for 48 hours after application.</li> <li>• Reapply after a heavy rainfall, and/or every three to four weeks or as pests are seen.</li> <li>• If temperatures exceed 85° F, spray in early morning or early evening when it is cooler. Do not apply in mid-day sunlight as temporary leaf burn may occur.</li> <li>• Some plants and/or tender new growth and blooms may be sensitive to essential oils. If not sure, test spray a few leaves/blooms one day before spraying entire plant. Do not use on plant if leaf burn or spotting is observed.</li> <li>• It is recommended that this product is tested in an inconspicuous area before using. A test duration of 48 hours or more is recommended.</li> </ul>
<b>HOW TO USE Shake Well Before Each Use</b>	<p><b>SPRAYING DIRECTIONS:</b></p> <ul style="list-style-type: none"> <li>• Connect sprayer to hose. Make sure the dial indicator on the nozzle is in the "OFF" position behind the safety tab.</li> <li>• Turn on water. Extend hose to the farthest area to be treated and work back towards the faucet to ensure complete coverage.</li> <li>• To BEGIN spraying, hold container upright and point nozzle toward treatment site (do not aim toward the ground). Bend the small plastic safety tab back with your thumb and turn knob clockwise until it stops in the "ON" position. Water will automatically mix with the product.</li> <li>• Spray as directed in the instructions for each use site below.</li> <li>• To STOP spraying, bend the small plastic safety tab back and turn dial counter-clockwise until the dial indicator is in the "OFF" position behind the safety tab.</li> <li>• Turn water off. To relieve pressure before removing sprayer from the hose, bend the safety tab back and turn dial to "WATER" until the water stops spraying. Then turn back to the "OFF" position.</li> <li>• Disconnect sprayer from hose.</li> </ul>
<b>FOR APPLICATIONS ON LAWNS</b>	
<b>HOW TO USE Shake Well Before Each Use</b>	<p><b>HOW TO APPLY:</b></p> <ul style="list-style-type: none"> <li>• Use ½ bottle (32oz) of EcoSmart® Yard Protection Concentrate for Mosquito and Tick Control to treat up to 5,000 sq ft of lawn, as an initial heavy wash application.</li> <li>• After one hour, disperse the remaining contents in the same manner as initial application.</li> <li>• Apply evenly over desired area as a thorough coverage spray. Delay watering for 48 hours after application.</li> </ul>

**FOR APPLICATIONS ON ORNAMENTAL TREES, SHRUBS AND FLOWERS**

<b>HOW TO USE Shake Well Before Each Use</b>	<p><b>HOW TO APPLY:</b></p> <ul style="list-style-type: none"> <li>• Apply as a thorough foliar spray.</li> <li>• Wet leaves and branches to the dripping point. Try to spray underside of leaves and penetrate dense foliage.</li> <li>• Spray into trees high enough to cover lower limbs.</li> <li>• Spray any standing water and under porches and decks.</li> <li>• Repeat after one hour.</li> <li>• Delay watering for 48 hours after application.</li> </ul>
--	--

**FOR MOSQUITO CONTROL:** Apply at dawn or dusk when mosquitoes tend to be the most active and accessible to spray.

**FOR TICK CONTROL:** Apply directly to lawn when the grass is less than 3 inches tall. Reapply every two weeks for maximum effect to break the life cycle.

Repeat applications may be necessary for heavy infestations.

**PRECAUTIONARY STATEMENTS:** This product contains wintergreen oil which may be harmful if swallowed and may irritate skin. Avoid contact with eyes & skin. Breathing vapors or mists may trigger breathing difficulty in asthmatics and others with allergies, physiological sensitivities or medical conditions.

**FIRST AID: If swallowed:** Call a poison control center or doctor for treatment advice. Do not give any liquid to the person. Do not induce vomiting unless told to by a poison control center or doctor. Do not give anything by mouth to an unconscious person. **If on skin or clothing:** Remove contaminated clothing. Rinse skin immediately with plenty of water for 15-20 minutes. Call a poison control center or doctor for treatment advice.

**STORAGE & DISPOSAL:** Make sure the dial indicator is turned to "OFF" position behind the safety tab. Store in original container in a cool, dry area and avoid excess heat. Keep from freezing. Do not reuse container. Offer for recycling if available or discard in trash.

**LIMITATION OF LIABILITY:** To the extent consistent with applicable law, Kittrich makes no warranties of merchantability or of fitness for a particular purpose, nor any other express or implied warranty except as stated above. Buyer assumes all responsibility for safety and use not in accordance with label, directions and precautionary statements.

This product has not been registered by the US Environmental Protection Agency. Kittrich Corporation represents that this product qualifies for exemption from registration under the Federal Insecticide, Fungicide, and Rodenticide Act.

ECSM-76123-0000. Formula No. Kit 005. EcoSmart - The Safe Pesticide Brand® is a registered trademark of Kittrich Corporation. The SAFE logo is a trademark of Kittrich Corporation. ©2020 Kittrich Corporation. All Rights Reserved. MADE IN USA. REV 01/20

4.28"

3.24"

3.24"

PAGE 2

PAGE 3

# BACK

## BASE LABEL

BACK SIDE ADHESIVE STICKS TO BOTTLE



(UNDER BOOK)