



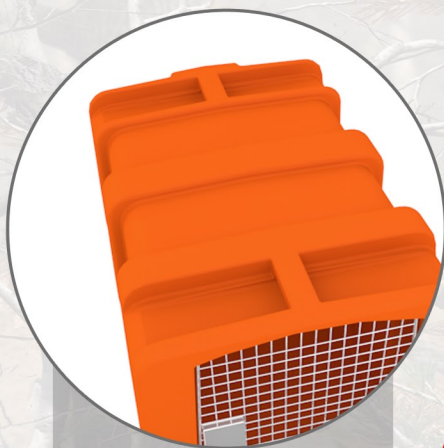
Vault & Kennel System

Kennebec Kennel

- 1-piece rugged, all-weather design
- Molded handles for secure transport
- Non-crushable
- Tie-down latches to secure to Vault
- Multi-Hinge, stainless steel door
- Made with dogs in mind, but can be used with all animal types & sizes

Badlands Vault

- Lockable and Waterproof
- Huge storage with adjustable dividers
- Fully extendable drawers for easy access
- Works with most standard trucks and SUVs
- Fits scoped rifles & shotguns
- Secures to floors or truck beds
- Will not buckle or crack
- Great for hunters or professionals with large cargo needs



Ultra-rugged crate is one solid unit, able to take serious abuse without damage. The entire unit can be lifted by the molded handles



Keyed lock to keep valuables safe. Easy-grip Heavy Duty handles.



Rubber latches lock down the optional crate

