

Hi-Yield[®]

**PEST CONTROL
CONCENTRATE**

*For Industrial, Institutional,
Commercial Use Only*

ACTIVE INGREDIENT:

Cypermethrin: (±) α -cyano-(3-phenoxyphenyl)
methyl (±)-*cis, trans*-3-(2,2-dichloroethenyl)-
2,2-dimethylcyclopropanecarboxylate* **25.40%**

INERT INGREDIENT:** **74.60%**
100.00%

*Cis/trans ratio: 47/53 (±) 10

**Contains petroleum distillates

Contains 2 pounds active ingredient per gallon.

KEEP OUT OF REACH OF CHILDREN

WARNING

Refer to attached card for full Precautionary
Statements and Directions for Use

EPA Reg. No. 53883-27-7401

EPA Est. No. 53883-TX-002

Voluntary Purchasing
Groups, Inc.
230 FM 87
Bonham, TX 75418



*Voluntary
Purchasing
Groups, Inc.*

NET CONTENTS: 1 OZ.

Hi-Yield[®]

PEST CONTROL CONCENTRATE

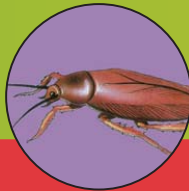
For Industrial, Institutional,
Commercial Use Only

- For use in houses, warehouses, industrial buildings, apartment buildings and other sites listed
- Provides effective insect control

**KEEP OUT OF REACH
OF CHILDREN
WARNING**

Refer to attached card for
Full Precautionary Statements
and Directions for Use.

CONTENTS: 1 OZ.



NO TEXT
AREA

Hi-Yield®

PEST CONTROL CONCENTRATE

ACTIVE INGREDIENT:**Cypermethrin****(±)α-cyano-(3-phenoxyphenyl)methyl****(±)-cis, trans-3-(2,2-dichloroethenyl)-2,2- dimethylcyclopropanecarboxylate *****25.40%****INERT INGREDIENTS**:****74.60%****TOTAL:****100.00%*** *Cis/trans* ratio: 47/53 (±) 10

** Contains petroleum distillates

Contains 2 pounds active ingredient per gallon.

FIRST AID

IF SWALLOWED:	Immediately call a poison control center or doctor. Do not induce vomiting unless told to do so by a poison control center or doctor. Do not give any liquid to the person. Do not give anything by mouth to an unconscious person.
IF ON SKIN OR CLOTHING:	Take off contaminated clothing. Rinse skin immediately with plenty of water for 15-20 minutes. Call a poison control center or doctor for treatment advice.
IF IN EYES:	Hold eye open and rinse slowly and gently with water for 15-20 minutes. Remove contact lenses, if present, after the first 5 minutes, then continue rinsing eye. Call a poison control center or doctor for treatment advice.
IF INHALED:	Move person to fresh air. If person is not breathing, call 911 or an ambulance, then give artificial respiration, preferably by mouth-to-mouth, if possible. Call a poison control center or doctor for further treatment advice.

NOTE TO PHYSICIAN: Contains Petroleum Distillates – Vomiting may cause aspiration pneumonia.**Have the product container or label with you when calling a poison control center or doctor, or going for treatment.**In the event of a medical or chemical emergency, contact  North America 1-800-255-3924 or Worldwide Intl. +01- 813-24-0585.**PRECAUTIONARY STATEMENTS
HAZARDS TO HUMANS AND DOMESTIC ANIMALS
WARNING**

MAY BE FATAL IF SWALLOWED. CAUSES SKIN IRRITATION. HARMFUL IF ABSORBED THROUGH SKIN OR INHALED. CAUSES MODERATE EYE IRRITATION. MAY CAUSE ALLERGIC SKIN REACTIONS. Do not get on skin or clothing. Avoid contact with eyes. Avoid breathing vapor or spray mist. Wear protective clothing and impermeable gloves when spraying, handling, or mixing concentrate. Wash thoroughly with soap and water after handling and before eating, drinking or using tobacco. Remove and wash contaminated clothing before reuse.

ENVIRONMENTAL HAZARDS

This product is extremely toxic to fish. Do not contaminate water when disposing of equipment wash waters. Do not apply directly to any body of water. Apply this product only as specified on this label. Care should be used when spraying to avoid fish and reptile pets.

For Treatment of Preconstruction Lumber and Logs: Do not discharge effluent containing this product into lakes, streams, ponds, estuaries, oceans or other waters unless in accordance with the requirements of a National Pollutant Discharge Elimination System (NPDES) permit and the permitting authority has been notified in writing prior to discharge. Do not discharge effluent containing this product to sewer systems without previously notifying the local sewage treatment plant authority. For guidance contact your State Water Board or Regional Office of the EPA.

PHYSICAL AND CHEMICAL HAZARDS

Do not use or store near heat or open flame.

DIRECTIONS FOR USE

It is a violation of Federal law to use this product in a manner inconsistent with its labeling.

For residual pest control in and on buildings and structures and their immediate surroundings and on modes of transport. Permitted areas of use include industrial buildings, houses, apartment buildings, laboratories, buses, greenhouses (non-commercial), and the nonfood/feed areas of stores, warehouses, vessels, railcars, trucks, trailers, aircraft (cargo areas only), schools, nursing homes, hospitals (nonpatient areas), restaurants, hotels and food manufacturing, processing, and servicing establishments.

Let treated surfaces/areas dry before allowing humans and pets to contact treated surface/areas. Do not use in commercial greenhouses or nurseries. Not for use on plants being grown for sale or other commercial use, or for commercial seed production, or for research purposes.

Do not use on food or feed crops.

Hi-Yield Pest Control Concentrate is intended for dilution with water for spray application.

Fill sprayer with the desired volume of water and add Hi-Yield Pest Control Concentrate. Close and shake before use in order to ensure proper mixing. Shake or reagitater sprayer before use if spraying is interrupted. Make up only as required; repeat treatments when needed.

EPA Reg. No. 53883-27-7401

EPA Est. No. 53883-TX-002

Voluntary Purchasing Groups, Inc.
230 FM 87
Bonham, TX 75418See inside card for additional
Precautionary Statements and
Directions for Use.

Pests				Concentration of Active Ingredient	Dilution Rate
Ants	Cockroaches	Elm Leaf Beetle ³	Millipedes	0.1%	½ fl. oz. (1 tbsp.) per 1 gal. water
Boxelder Bugs	(Maintenance)	Firebrats	Mosquitoes ²		
Centipedes	Crickets	Fleas ²	Pillbugs		
Chiggers ^{2,3}	Earwigs	Flies ¹	Silverfish Sowbugs		
Bees		Ticks		0.2%	1 fl.oz. (2 tbsp.) per 1 gal. water
Cockroaches (Clean-out)		Wasps			
Scorpions		Wood Infesting Beetles			
Spiders					

¹Not for indoor use in California for fly control.

²Outdoor use only.

³Not approved for use in California.

Cockroaches, Spiders, Crickets, Scorpions, Silverfish, Ticks, and Firebrats: Apply as a coarse, low-pressure spray to areas where these pests hide, such as baseboards, corners, storage areas, closets, around water pipes, doors and windows, attics and eaves, behind and under refrigerators, cabinets, sinks, furnaces and stoves, the underside of shelves, drawers, and similar areas. Pay particular attention to cracks and crevices; also see “OUTSIDE SURFACES AND AROUND BUILDINGS.”

Ants: Apply to any trails, around doors and windows, and similar areas where ants may be found. Refer to “BARRIER TREATMENT” directions to prevent infestation; also see “OUTSIDE SURFACES AND AROUND BUILDINGS.”

Wasps and Bees: Application to nests should be made late in evening when insects are at rest. Thoroughly spray nest and entrance and surrounding areas where insects alight; also see “OUTSIDE SURFACES AND AROUND BUILDINGS.”

Boxelder Bugs, Sowbugs, Pillbugs, Millipedes, Elm Leaf Beetle, and Centipedes: Apply around doors and windows and similar areas where these pests may be found or where they may enter premises. Spray baseboards, storage areas, and other locations. Refer to “BARRIER TREATMENT” directions to prevent infestation; also see “OUTSIDE SURFACES AND AROUND BUILDINGS.”

Flies: Apply directly to walls, ceilings, window screens, and other fly resting areas as a residual surface treatment. May be used inside residential buildings as well as in and around carports, garages, and storage sheds; also see “OUTSIDE SURFACES AND AROUND BUILDINGS.”

Scorpions: Treat and remove accumulations of lumber, firewood, and other materials which serve as harborage sites. Apply as a coarse spray to the point of drip; also see “OUTSIDE SURFACES AND AROUND BUILDINGS.”

Control of Wood Infesting Beetles: To control wood infesting insects, such as powderpost beetle (*Lyctidae*), false powderpost beetles (*Bostrichidae*), deathwatch beetles (*Anobiidae*), old house borers (*Cerambycidae*), and ambrosia beetles (*Scolytidae*), in homes and other structures, apply as an emulsion containing 0.2% Hi-Yield Pest Control Concentrate. For treatment of small areas, apply by brushing the emulsion evenly on wood surfaces. For large or overhead areas, apply as a coarse spray but do not let runoff occur. When spraying overhead interior areas of homes, apartment buildings, etc., spray to the point of runoff, cover all surfaces below the area being sprayed with plastic sheeting or other material which could be disposed of by placing in trash if contamination from dripping occurs. Sprayed surfaces should be avoided until spray has totally dried. Do not use in structures occupied by animals to be used for food purposes or which produce products for human consumption.

Food-Handling Establishments: Places other than private residences in which food is held, processed, prepared, or served:

Nonfood/Feed Areas: Hi-Yield Pest Control Concentrate may be used as a general, spot, or crack and crevice treatment in nonfood/feed areas. Similar areas where insects hide or through which insects may enter should be treated. Examples of nonfood areas include garbage rooms, lavatories, floor drains (to sewers), entries and vestibules, offices, locker rooms, machine rooms, boiler rooms, garages, mop closets, and storage (after canning or bottling).

Food Areas: Hi-Yield Pest Control Concentrate is not labeled for use in food areas. Do not use in food areas of food-handling establishments, restaurants, or other areas where food is commercially prepared or processed. Do not use in serving areas while food is exposed or facility is in operation. Serving areas are areas where prepared foods are served, such as dining rooms, but excluding areas where foods may be prepared or held. In the home, all food-processing surfaces and utensils should be covered during treatment or thoroughly washed before use. Exposed food should be covered or removed. Examples of food areas are for receiving, storage, packing (canning, bottling, wrapping, boxing), preparing, edible waste storage, and enclosed processing systems (mills, dairies, edible oils, syrups). Serving areas (when food is exposed and facility is in operation) also would be considered a food area.

OUTSIDE SURFACES AND AROUND BUILDINGS

Apply Hi-Yield Pest Control Concentrate using a 0.1% emulsion as a residual treatment to outside surfaces of buildings including, but not limited to, exterior siding, foundations, porches, window frames, eaves, patios, garages, and other similar areas. Also may be used on lawns and ornamentals in landscaped areas around private homes, duplexes, townhouses, condominiums, house trailers, apartment complexes, carports, garages, fence lines, storage sheds, barns, and other residential structures and commercial, industrial, institutional, and public buildings. Treatment may also be made to soil, trunks of woody ornamentals, and other similar areas where pests congregate or are active.

When making an application to vinyl siding, treat a small area and allow to dry. Some types of vinyl siding, particularly if aged or weathered, may show some staining after application of an emulsifiable concentrate product.

Barrier Treatment (except cockroaches): Apply 0.1% to a band of soil and vegetation 6 to 10 feet wide around and adjacent to the structure. Also, treat the foundation of the structure to a height of 2 to 3 feet. Use treatment volume of 2 to 10 gallons per 1,000 square feet. Higher volumes of water may be needed if mulch or leaf litter is present or dense foliage. House siding may be treated if boxelder bugs, elm leaf beetles, earwigs or silverfish, or other similar pests are present.

Treatment of Preconstruction Lumber and Logs*:

PRE-CONSTRUCTION TREATMENT: DO NOT APPLY AT A LOWER DOSAGE AND/OR CONCENTRATION THAN SPECIFIED ON THIS LABEL FOR APPLICATIONS PRIOR TO INSTALLATION OF THE FINISHED GRADE.



TABLE 1 Treatment Solution Specifications		
Pests	Concentration of Hi-Yield Pest Control Concentrate	Dilution Rate
Wood infesting insects such as: Termites, Carpenter Ants, Wood-boring beetles including Powder Post Beetles, old House Borers, Ambrosia Beetles, and others.	0.25%	1:400 (2 ½ gal per 1,000)
	0.5%	1:200 (5 gal per 1,000)



To protect unseasoned lumber and logs from wood-destroying insects, such as termites, carpenter ants, and beetles (ambrosia, powder-post, old house borers, and others), totally treat wood with a 0.25% to 0.5% solution of Hi-Yield Pest Control Concentrate. (See Table 1 above for dilution information). This solution can be applied by various methods, including spraying, brushing, dipping, and pressure treatment. Frequent monitoring of dip and pressure systems are necessary to ensure that the desired level of Hi-Yield Pest Control Concentrate is maintained. Wood can be handled after treatment when dry.

1. For dip treatments, the wood should be totally submerged in the solution until thoroughly wet and then allowed to dry in a suitable location. Dipping solutions to which Hi-Yield Pest Control Concentrate has been added should be agitated before use if left unused for long periods of time. Sediment, debris, and other deposits should be periodically cleaned from the tank.
2. For pressure treatments, the wood should be placed in the treatment chamber, the Hi-Yield Pest Control Concentrate solution added, and the system pressurized up to 250 psi for up to 1 hour, depending on the density and type of wood treated. After the pressure is released and the system drained, the wood should be placed in a suitable location for drying.
3. For spray treatments, the wood should be sprayed thoroughly, including back and ends.
4. For brush treatments, all parts of wood surfaces should be thoroughly treated.

*Not approved for use in California.

Note: Do not use water-based sprays of Hi-Yield Pest Control Concentrate in conduits, motor housings, junction boxes, switch boxes, or other electrical equipment because of possible shock hazard. Let surfaces dry before allowing children and pets to contact surfaces. Protect aquariums from spray mist. For best results, thoroughly wash out sprayer and screen with water and detergent before using Hi-Yield Pest Control Concentrate.

Do not use this product with oil.

Do not apply this product to edible crops.

During any application to overhead interior areas of structure, cover surface below with plastic shielding or similar material.

Do not use as a space spray.

Use only in well-ventilated areas.

Do not apply this product in any room being used as living, eating, sleeping, or recovery area by patients, the elderly, or infirm when they are in the room.

Do not apply to classrooms when in use.

Do not apply to institutions (including libraries, sports facilities, etc.) in the immediate area when occupants are present.

Do not use in warehouses where raw or cured tobacco is stored.

Do not use in warehouses where raw agricultural commodities for food or feed are being stored.

Do not use in aircraft cabins.

STORAGE AND DISPOSAL

Do not contaminate water, food or feed by storage or disposal.

Storage and Spill Procedures: Store upright at room temperature. Avoid exposure to extreme temperatures. In case of spillage or leakages, soak up with an absorbent material such as sand, sawdust, earth, Fuller's earth, etc. Dispose of with chemical waste.

Pesticide Disposal: Pesticide, spray mixture or rinse water that cannot be used according to label instructions must be disposed of at or by an approved waste disposal facility.

Container Disposal:

For Containers equal to or less than 5 Gallons: Nonrefillable container. Do not reuse or refill this container. Clean container promptly after emptying. Triple rinse as follows: Empty the remaining contents into application equipment or a mix tank and drain for 10 seconds after the flow begins to drip. Fill the container ¼ full with water and recap. Shake for 10 seconds. Pour rinsate into application equipment or a mix tank or store rinsate for later use or disposal. Drain for 10 seconds after the flow begins to drip. Repeat this procedure two more times. Offer for recycling if available. If recycling is not available: then dispose of container in a sanitary landfill or, if allowed by State and local authorities, by burning. If burned, stay out of smoke.

NOTE: VOLUNTARY PURCHASING GROUPS, INC. (VPG) WARRANTS THAT THIS PRODUCT CONFORMS TO THE CHEMICAL DESCRIPTION ON THE LABEL THEREOF AND IS REASONABLY FIT FOR THE PURPOSES STATED ON SUCH LABEL ONLY WHEN USED IN ACCORDANCE WITH THE DIRECTIONS UNDER NORMAL USE CONDITIONS. IT IS IMPOSSIBLE TO ELIMINATE ALL RISKS INHERENTLY ASSOCIATED WITH THE USE OF THIS PRODUCT. INEFFECTIVENESS, OR OTHER UNINTENDED CONSEQUENCES MAY RESULT BECAUSE OF SUCH FACTORS AS WEATHER CONDITIONS, PRESENCE OF OTHER MATERIALS, OR THE MANNER OR APPLICATION, ALL OF WHICH ARE BEYOND THE CONTROL OF VPG. IN NO CASE SHALL VPG BE LIABLE FOR CONSEQUENTIAL, SPECIAL OR INDIRECT DAMAGES RESULTING FROM THE USE OR HANDLING OF THIS PRODUCT. ALL SUCH RISKS SHALL BE ASSUMED BY THE BUYER. EXCEPT AS EXPRESSLY PROVIDED HEREIN, VPG MAKES NO WARRANTIES, GUARANTEES, OR REPRESENTATIONS OF ANY KIND, EITHER EXPRESSED OR IMPLIED, OR BY USAGE OF TRADE, STATUTORY OR OTHERWISE, WITH REGARD TO THE PRODUCT SOLD, INCLUDING, BUT NOT LIMITED TO, MERCHANTABILITY, FITNESS FOR A PARTICULAR PURPOSE, USE OR ELIGIBILITY OF THE PRODUCT FOR ANY PARTICULAR TRADE USAGE. BUYER'S OR USER'S EXCLUSIVE REMEDY, AND VPG'S TOTAL LIABILITY, SHALL BE FOR DAMAGES NOT EXCEEDING THE COST OF THE PRODUCT.