

RIGHT BACK PANEL  
ON FINISHED BAG



Flowers and Shrubs (Ornamental Plantings) in Landscape and Foundation Plantings

Pests	Pounds of This Product / 1000 sq. ft.	Specific Directions
Ants (except harvester, pharaoh and carpenter ants), Armyworms, Centipedes, Crickets, Cutworms, Earwigs, Firebrats, Silverfish, Spiders	2.25 to 5	Application to wet foliage during periods of high humidity may cause injury to tender foliage.
Flies	7 to 9	Using a spreader, apply granules in a 6-foot band around the home, to shrub and flowerbeds, foundations, ornamental plantings and lawn or soil areas immediately adjacent to the home. Treated area must be thoroughly watered after application to remove the chemical from the granules.
Scorpions	5	Repeat as needed up to 3 times per year but do not apply more often than once every 7 days. Do not use on plants above chest height.
Ticks	1.15	Repeat as needed up to 3 times per year but do not apply more often than once every 7 days. Do not use on plants above chest height.

Will kill target pests that are present only at the time of application. Pest must be directly contacted for product to be effective.

**Nuisance Pests Around the Outside of Homes, Porches, and Patios**

To Kill Fleas: Apply granules at the rate of 4-8 lbs. per 1000 sq. ft.  
To Kill Ticks: Apply granules at the rate of 1.15 lbs. per 1000 sq. ft.  
To Kill Scorpions: Apply granules at the rate of 5 lbs. per 1000 sq. ft.

To Kill Ants (except harvester, pharaoh and carpenter ants), Armyworms, Centipedes, Crickets, Cutworms, Earwigs, Firebrats, Millipedes, Silverfish, Sowbugs, Spiders: Using a spreader, apply granules uniformly in an 8-foot band around the outside perimeter of home. Apply granules at the rate of 2-12 lbs. per 1000 sq. ft. to shrub and flower beds, foundations, ornamental plantings and lawn and soil areas immediately adjacent to the home. Treated area must be watered immediately after application to remove the chemical from the granules. Repeat application as necessary up to a total of 4 times per year, but not more often than once every 7 days. Will kill target pests that are present only at the time of application. Pest must be directly contacted for product to be effective.

**Nuisance Pests in Listed Garden Vegetables and Strawberries**

To Kill ants (except harvester, pharaoh and carpenter ants), centipedes, crickets, cutworms, earwigs, grasshoppers, millipedes, sowbugs (pillbugs) and springtails apply granules with a spreader at the rate given below. Water lightly after application to release the chemical from the granules. Begin applications when insect or damage is first observed and repeat as directed below. Will kill target pests that are present only at the time of application. Pest must be directly contacted for product to be effective.

Retreatment intervals (days between treatments) and other restrictions are found listed in the table below.

**Preharvest Use Limitation:** Observe the listed preharvest intervals (number of days between the last application and harvest) for application during the growing season.

Crop	Application Rate (lbs./1000 sq. ft.)	Maximum Yearly Application Rate (lbs./1000 sq. ft.)	Retreatment Interval Days	PHI (days)	Comments
Asparagus (open)	2.3	4.6	3	1	Total maximum seasonal application rate is 11.5 lbs. per 1000 sq. ft. per year. The total number of applications is 3 prior to harvest with 2 additional applications only to be made after harvest of spears.
Asparagus (stem)	2.3	4.6	3	1	Total maximum seasonal application rate is 11.5 lbs. per 1000 sq. ft. per year. The total number of applications is 3 prior to harvest with 2 additional applications only to be made after harvest of spears.
Edible-podded legume vegetables including snap bean, wax bean, yardlong bean, pea bean, edible-podded snow pea, sugar snap pea, dried shell beans and peas (including field beans, kidney bean, lima bean (dry), navy bean, cranberry, black bean, black-eyed pea, cowpea, mung bean, southern pea, lentil (dry))	1.7	6.9	7	3(1)	EP - edible-podded 1 - crop. Total number of applications per crop can be 4. Use on succulent peas or beans is prohibited.
Garden beet (root), Carrots, Horseradish, Radishes, Rhubarb, Rutabaga, Salsify, Turnips (root)	1.2-2.3	6.9	7	7	Total number of applications per crop can be 6 (some of which must be lower than the maximum single application rate)
Broccoli sprouts, Broccoli, Cabbage, Cauliflower, Chinese Cabbage, Collards, Kale, Kohlrabi, Mustard greens	1.7-2.3	6.9	7	3(1)	A - Broccoli sprouts, Broccoli, Cabbage, Cauliflower and Cauliflower, Chinese Cabbage, Kale, Kohlrabi, Mustard greens. Total number of applications per crop can be 6 (some of which must be lower than the maximum single application rate). Application is only permitted within 30 days of crop emergence or the start of resistance.
Cucumber, melon, Squash	1.2	6.9	7	3	Total number of applications per crop can be 5
Garden (beet)top, Turnips (top)	2.3	6.9	7	14	Total number of applications per crop can be 3
Potatoes	2.3	6.9	7	7	Total number of applications per crop can be 5
Strawberry	2.3	11.5	7	7	Total number of applications per crop can be 5
Tomato, Pepper, Eggplant	2.3	9.2	7	3	Total number of applications per crop can be 4

Sevin Grub Killer granules are applied using a ground spreader. Spreader and settings are found in the table below. Do not repeat applications more often than indicated above.

Spreader	Type	Rate (lbs./1000 sq. ft.)	Setting
Scotts Precision Green P-4	Drop	2.25	3
		4.6	11
		6.9	16.5
Cyclone Rotary	Rotary	2.25	5
		4.6	8
		6.9	14
Earthway Rotary	Rotary	2.25	14
		4.6	18
		6.9	27
Earthways Ev-N-Spread	Rotary	2.25	NA
		4.6	18
		6.9	27
Republic EZ	Drop	2.25	9
		4.6	13
		6.9	13
Scotts Speedygreen 3000	Rotary	2.25	8
		4.6	NA
		6.9	NA
Craftman Rotary (R195)	Rotary	2.25	6
		4.6	10
		6.9	15
Precision EZ Spread SB550	Rotary	2.25	7
		4.6	9
		6.9	NA
Pumilio Star-Green SB4500	Drop	2.25	3
		4.6	3.2
		6.9	NA
Agri-Fab 85D Spreader Model # 450125302	Rotary	2.25	6
		4.6	7
		6.9	10
Craftman Model #86-19780	Drop	2.25	5
		4.6	8
		6.9	9
Scott Accugreen Model AG-3	Drop	2.25	6
		4.6	7
		6.9	12
Scott Speedygreen Model 1000	Rotary	2.25	6.75
		4.6	4
		6.9	7

NA: Not applicable, no setting for this rate.

**NOTICE:** Research and testing have determined that the "Directions for Use" are appropriate for the proper use of this product under expected conditions. To the extent consistent with applicable law, the Buyer assumes responsibility for lack of performance or safety if not used according to the directions.

01210C

FACE PANEL

**Kills Ticks!**  
Including Those That May Vector Lyme Disease

GARDENTECH

# Sevin

## Lawn Insect Granules



**Kills Over 30 Pests**  
On Lawns, Ornamentals, And Around Homes

Slow Release Granules - Covers Up To 4,292 Sq. Ft.

KEEP OUT OF REACH OF CHILDREN  
**CAUTION**  
See Back Panel For Precautionary Statements

NET WEIGHT 10 lbs. (4.54 kg.)

ACTIVE INGREDIENT: Carbaryl 2.0%  
OTHER INGREDIENTS: 98.0%  
TOTAL: 100.0%  
CAS Number 89-26-2

**Kills Ticks!**  
Including Those That May Vector Lyme Disease

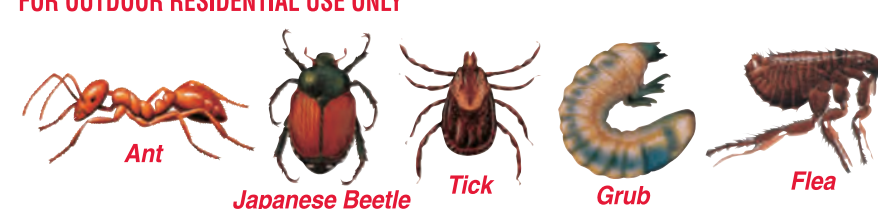
GARDENTECH  
**Sevin**  
Lawn Insect Granules  
Easy To Use Granules

**USE ON LAWNS, ORNAMENTALS AND AROUND HOMES**

LEFT BACK PANEL  
ON FINISHED BAG



FOR OUTDOOR RESIDENTIAL USE ONLY



**FIRST AID**  
This product is a N-methyl carbamate and is a cholinesterase inhibitor.  
**If Swallowed:**  
• Call poison control center or doctor immediately for treatment advice.  
• Have person sip a glass of water if able to swallow.  
• Do not induce vomiting unless told to do so by the poison control center or doctor.  
• Do not give anything by mouth to an unconscious person.  
**If on Skin or Clothing:**  
• Take off contaminated clothing.  
• Rinse skin immediately with plenty of water for 15-20 minutes.  
• Call a poison control center or doctor for treatment advice.  
**If in Eyes:**  
• Hold eye open and rinse slowly and gently with water for 15-20 minutes.  
• Remove contact lenses, if present, after the first 5 minutes, then continue rinsing eye.  
• Call a poison control center or doctor for treatment advice.

**HOTLINE NUMBER:**  
Have the product container or label with you when calling a poison control center or doctor, or going for treatment. You may also contact 1-800-420-5347 for emergency treatment information.

**NOTE TO PHYSICIAN:** CARBARYL is an N-methyl carbamate insecticide which is a cholinesterase inhibitor. Specific antidote consists of atropine, Narcanox and other sedatives should not be used. Drugs like 2-PM (pyridine-2-alkoxime methiodide) are not recommended.

**PRECAUTIONARY STATEMENTS**  
HAZARDS TO HUMANS & DOMESTIC ANIMALS

**CAUTION**

Harmful if swallowed. Harmful if absorbed through skin. Avoid contact with eyes, skin or clothing. Wear long-sleeved shirt and long pants, and shoes plus socks and chemical resistant gloves (household or latex rubber gloves) when handling this product. Remove immediately if pesticide gets inside. Then wash thoroughly and put on clean clothing. Wash hands before eating, drinking, chewing gum, tobacco, or using the toilet. Remove contaminated clothing and wash before reuse.

This product is extremely toxic to aquatic invertebrates. Do not apply directly to water or allow drift to water. To protect the environment, do not allow pesticide to enter or run off into storm drains, drainage ditches, gutters or surface waters. Applying this product in calm weather when rain is not predicted for the next 24 hours will help to ensure that wind or rain does not blow or wash pesticide off the treatment area. Sweeping any product that lands on a driveway, sidewalk, or street, back onto the treated area of the lawn or garden will help to prevent run off to water bodies or drainage systems.

**DIRECTION FOR USE:**  
It is a violation of Federal law to use this product in a manner inconsistent with its labeling. Read Entire Label Before Using This Product.

Strictly observe label directions and restrictions.

**Restrictions:**  
Do not allow people or pets to enter the treated area until dusts have settled. Do not allow people (except those involved in the watering) or pets to enter the treated area until the watering is completed and the area has dried.

Do not apply this product in a way that will contact any person or pet, either directly or through drift. Keep people and pets out of the area during application.

For outdoor use only.  
Do not apply by hand, spoon, or belly grinder.  
Product must be watered in immediately following application.

Not for use on plants grown for sale or commercial use, research or commercial seed production.

**STORAGE AND DISPOSAL**

**Storage:** Store in original container in a cool, dry place away from children and animals. Avoid excess heat.

**Disposal:** If empty: Non-refillable container. Do not reuse or refill this container. Offer for recycling if available. If not available, place in trash or offer for recycling if available.

**If partly filled:** Call your local solid waste agency or 1-866-945-5033 for disposal instructions. Never place unused product down any indoor or outdoor drain.

**LAWNS**

Use when insects first appear and/or plant damage is imminent. Apply when air is calm. For best results, mow lawn first and then apply material uniformly to dry turfgrass using a spreader. Repeat applications as necessary up to a total of 4 times per year but not more often than once every 7 days.

Pests	Pounds of This Product / 1000 sq. ft.	Comments
Ants (except harvester, pharaoh and carpenter ants), Armyworms, Centipedes, Chiggers, Chinch Bugs, Cutworms, Earwigs, Essex silverling European chaffer, Fall armyworm, Flary skipper, Grasshoppers, Green June beetle larvae, Leafhoppers, Lucerne moth, Millipedes, Moquitoes (youth), Scab beetles (adults), such as May beetle, June beetle, Japanese beetle, Green June beetle, Sod webworm (lawn moth), Sowbugs, Spottedbugs, Springtails, Yellow-striped armyworms.	2.25	Product must be watered in immediately following application. For heavy infestations of Chinch bugs, increase rate to 5 lbs per 1000 sq. ft. and treat the entire area.
Chinch bug, Japanese beetle, Sod webworm (lawn moth), Sowbugs, Spottedbugs, Springtails, Yellow-striped armyworms.	9	To effectively kill subsurface pests, apply when insects are actively feeding near the soil surface, usually during late March through May, or July through early September, or as guided by local agricultural extension service agents.
Flies	7-9	
Scorpions	5	
Ticks	1.15	

Will kill target pests that are present only at the time of application. Pest must be directly contacted for product to be effective.

**Ticks That May Vector Lyme Disease**

To kill juvenile and adult Ixodes spp. ticks (Deer Ticks and Black Legged Tick) and ticks (Lone Star Tick) which may vector Lyme Disease: Apply granules at the rate of 1.15 pounds of product per 1000 sq. ft. with a spreader to ensure uniform coverage. Target applications to kill juvenile ticks (larvae and nymphs) in late spring or early summer (May/June). Adult ticks can be killed with late summer and fall applications (August/September). Make applications to lawns, shrub beds, ornamental plantings, wooded areas and around outside perimeters of homes and other buildings. Treat entire lawn and perimeter wooded areas and property boundaries where exposure to ticks may occur. Irrigate treated areas thoroughly after application to remove chemical from the granules and move down into thatch. Ticks may be reintroduced from surrounding areas or host animals. Reapply as necessary up to a total of 4 times per year, but not more often than once every 7 days. Will kill target pests that are present only at the time of application. Ticks must be directly contacted for product to be effective.

EPA Reg. No. 432-1212-11004  
EPA Est. 6172-GA-1, 2014-04-14  
Subscript used is first letter of run code on container.



**GARDENTECH**

Distributed by: TechPac, LLC.  
PO Box 24830  
Lexington, KY 40524

Sevin is a registered trademark of Bayer. GardenTech is a registered trademark of Gulfstream Home & Garden, Inc. For MEDICAL Emergencies ONLY Call 24 Hours A Day 800-420-5347. For DANGEROUS SITUATIONS Emergency ONLY Call 24 Hours A Day 800-420-5347. For PRODUCT USE Information Call 866-945-5033.

**WARNING:** This product contains carbaryl, a chemical known to the State of California to cause cancer and reproductive harm in laboratory animals.