

Zylam® 20SG

SYSTEMIC TURF INSECTICIDE

Rapid control of tough turfgrass insects!

Zylam® 20SG Systemic Turf Insecticide is a 20% a.i. soluble granule formulation of dinotefuran, a third generation neonicotinoid insecticide. It is the product of choice when you need "muscle in your tank" for outstanding control of tough turfgrass pests including both root- and leaf-feeding insects on your most troublesome turf areas.

Zylam provides rapid control of many key turfgrass insect pests including mole crickets, European crane flies, billbugs and annual bluegrass weevils and provides activity on chinch bug, cutworms and white grub larvae.

The active ingredient in Zylam acts on insect pests through contact and ingestion resulting in the termination of feeding. Insect death occurs shortly after.

Highly systemic, Zylam moves from the soil to the plant. It translocates quickly within the vascular tissue (xylem) of turfgrass providing control in as little as two days on some insect species. The product is also translaminar, allowing it to be sprayed on the upper surfaces of a turfgrass blade and moving to the underside.

Zylam 20SG is an easy-to-use soluble granule. These dust-free extruded granules are easy to mix, dissolving completely in water. Zylam should be watered in after application. It is packaged in a convenient 2.7 lb. jug which covers 1-acre of turf. The end-use mixed product is colorless and odorless.

Zylam® is a registered trademark of PBI-GORDON CORPORATION.



RECOMMENDATIONS

For use on all turfgrass areas including residential, commercial and recreational such as golf courses, home lawns, apartment and condo complexes, parks, athletic fields, office complexes, hotels and sod farms.

ACTIVE INGREDIENTS:

Dinotefuran, [N-methyl-N'-(nitro-N''-(tetrahydro-3-furanyl)methyl)guanidine] 20%
Other Ingredients 80%

EPA Reg. No. 2217-935

PACKAGING:

Plastic 4 x 2.7 lb. jug per case:
shipping weight 14 lbs.

READ LABEL BEFORE USE

The literature contained herein is not intended to be used as a substitute for the information contained on the label of the product container. Specimen labels and other literature are subject to revision. Before using this product, read and follow all label instructions on the container/package.

Not registered in the state of New York

*Supporting Data Available
pbigordon.com/zylam20SG*



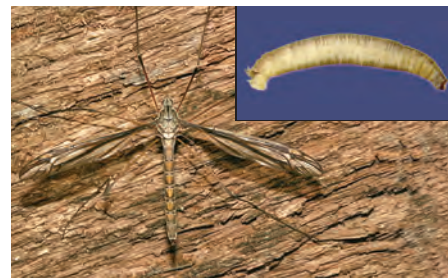
An Employee-Owned Company

1217 W. 12TH STREET • P.O. BOX 014090
KANSAS CITY, MISSOURI 64101-0090
816.421.4070 • FAX 816.474.0462
800.821.7925

© 2011, PBI-Gordon Corporation



CHINCH BUG



EUROPEAN CRANE FLY



MOLE CRICKET



ANNUAL BLUEGRASS WEEVIL

- Controls root- and leaf-feeding insects
- Labeled for all turfgrass areas
- Moves from the soil into the plant
- Rapid uptake and translocation

- Extended systemic control
- For tough turfgrass insects
- Low-odor
- Convenient 1-acre packaging