

Silverfish Identification and Biology

What Do Silverfish Look Like?

By DoMyOwn staff

OVERVIEW



Silverfish are small pests that can cause damage to your possessions, especially those made of natural fibers. [Silverfish](#) are attracted to sugars and starches and prefer natural materials such as cotton, silk, and linen. They will eat books, wallpaper, carpet, glue, hair, paper, photos, and can damage tapestries. Luckily, silverfish do not bite or carry disease.

Use this guide to identify silverfish. If you have silverfish and need to remove them, continue reading our silverfish guide to learn [how to find silverfish in your home](#) and [how to kill silverfish](#).

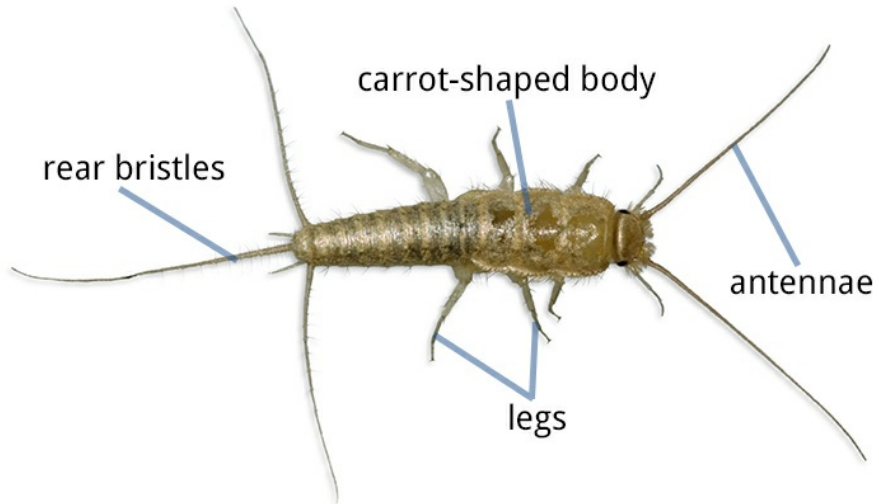
SIZE



Silverfish measure 1/2 - 3/4 inches in length.

SHAPE

SILVERFISH



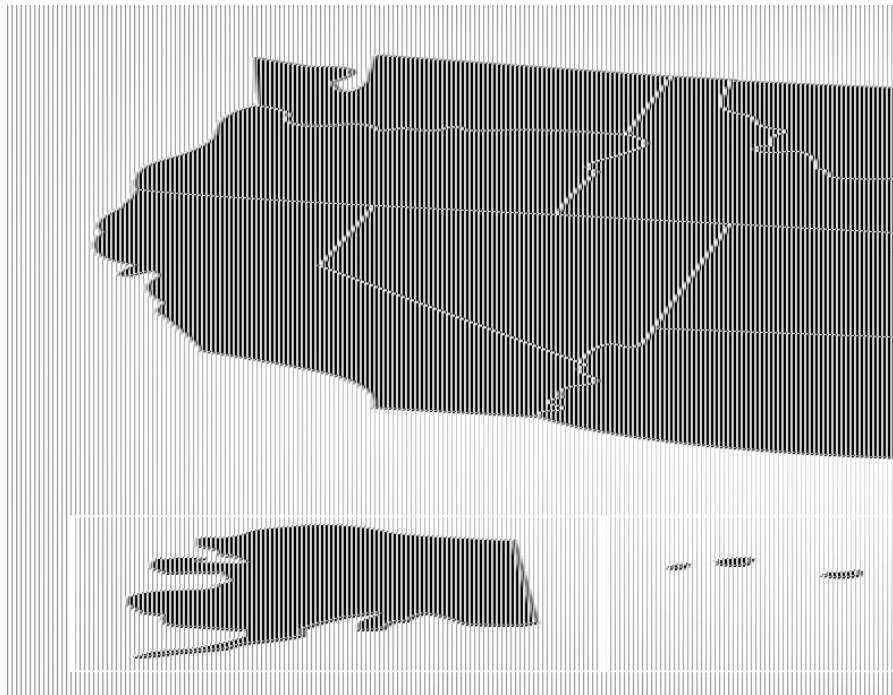
Silverfish have carrot-shaped bodies and do not have wings. They have 2 antennae and 3 long bristles on their rear.

COLOR



As their name implies, adult silverfish are gray and metallic, thus appearing silver. Young silverfish are white or cream in color.

RANGE



Silverfish can be found across the United States.

Found silverfish? Read part 2 of our 4-part guide to discover [where silverfish hide in your home](#). Click the arrow below to read more.