

# Controls weeds and grasses up to 6 months – with just one treatment.



**Esplanade<sup>®</sup>**  
**EZ**

Save time. Reduce labor costs. Conserve your budget.

- Controls existing weeds & grasses plus prevents new weeds & grasses for up to 6 months
- Pre-mixed for backpack sprayer applications
- Safe for use near landscape trees and shrubs
- Delivers visible results in hours
- Perfect for treating curbs, sidewalks, streets, parking lots, park paths and fencelines, even gravel and mulched areas

*"I don't need to waste time worrying about weeds. I have enough to do. I want a solution that makes my job easier. "*



As a municipality maintenance manager, you're probably responsible for controlling weeds in sidewalks, medians, parking lots and more. You coordinate crews armed with backpack sprayers to make at least 3-4 passes across your city every year, but the weeds keep coming. All the mixing and retreating takes time, and labor costs can eat up your budget. You need to keep things simple. You need Esplanade EZ.

## ***Esplanade EZ lasts longer***



(5 months after treatment)



(5 months after treatment)

ALWAYS READ AND FOLLOW LABEL INSTRUCTIONS.

© 2013 Bayer CropScience LP, Environmental Science Division, 2 T.W. Alexander Drive, Research Triangle Park, NC 27709. Bayer (reg'd), the Bayer Cross (reg'd) and Esplanade® are registered trademarks of Bayer. Roundup is a registered trademark of Monsanto. Not all products are registered in all states. 07.13GIVMESP-TB

The municipal employees depicted in this brochure are fictional, and the quotes are for illustrative purposes and based on market research.

[BackedbyBayer.com/Esplanade](http://BackedbyBayer.com/Esplanade)

# Longer-lasting weed and grass control for larger areas.



**Esplanade<sup>®</sup>**  
200 SC

Save time. Reduce labor costs. Conserve your budget.

- Controls more than 75 grassy and broadleaf weeds, including the tough resistant ones (e.g. Kochia, Marestalk, Pigweed)
- Offers longer-lasting control than other pre-emergent products
- Mixable with both post-emergent actives like glyphosate and other pre-emergent herbicides
- Delivers superior residual control which means fewer retreatments
- Requires less active ingredient on the ground for more sustainability
- Perfect for large acreage projects

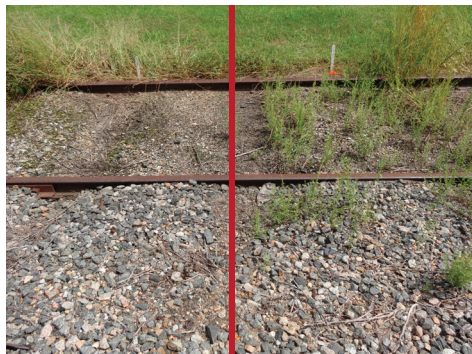
*“There are a LOT of weeds out there, and I have a lot of ground to cover. I could use some help.”*



If you are the facilities manager for a city or municipality, you're probably responsible for maintaining large paved, gravel and bareground areas where weeds are not allowed. This is not an easy job, even with a fleet of truck-mounted sprayers. You have to work with multiple tank mixes, coordinate application schedules, and of course, stay on budget. Plus controlling weeds is just one small part of your job. It can be exhausting. But we have a way to make your job easier – Esplanade 200SC.

## **Esplanade 200SC gets the job done.**

(5 months after treatment)



Esplanade 5 oz/ac +  
Perspective 8 oz/ac +  
Glyphosate 2 qts/ac

Diuron 80DF 8 lbs +  
Proclips 2.3 lbs +  
Glyphosate 2 qts/ac

[BackedbyBayer.com/Esplanade](http://BackedbyBayer.com/Esplanade)

ALWAYS READ AND FOLLOW LABEL INSTRUCTIONS.

© 2013 Bayer CropScience LP. Environmental Science Division, 2 T.W. Alexander Drive, Research Triangle Park, NC 27709. Bayer (reg'd), the Bayer Cross (reg'd) and Esplanade® are registered trademarks of Bayer. Roundup is a registered trademark of Monsanto. Not all products are registered in all states. 07.13GIVMES-P-TB

The municipal employees depicted in this brochure are fictional. and the quotes are for illustrative purposes and based on market research.